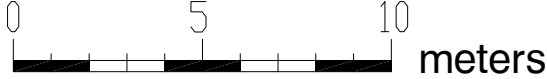
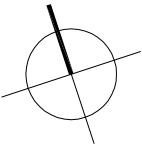
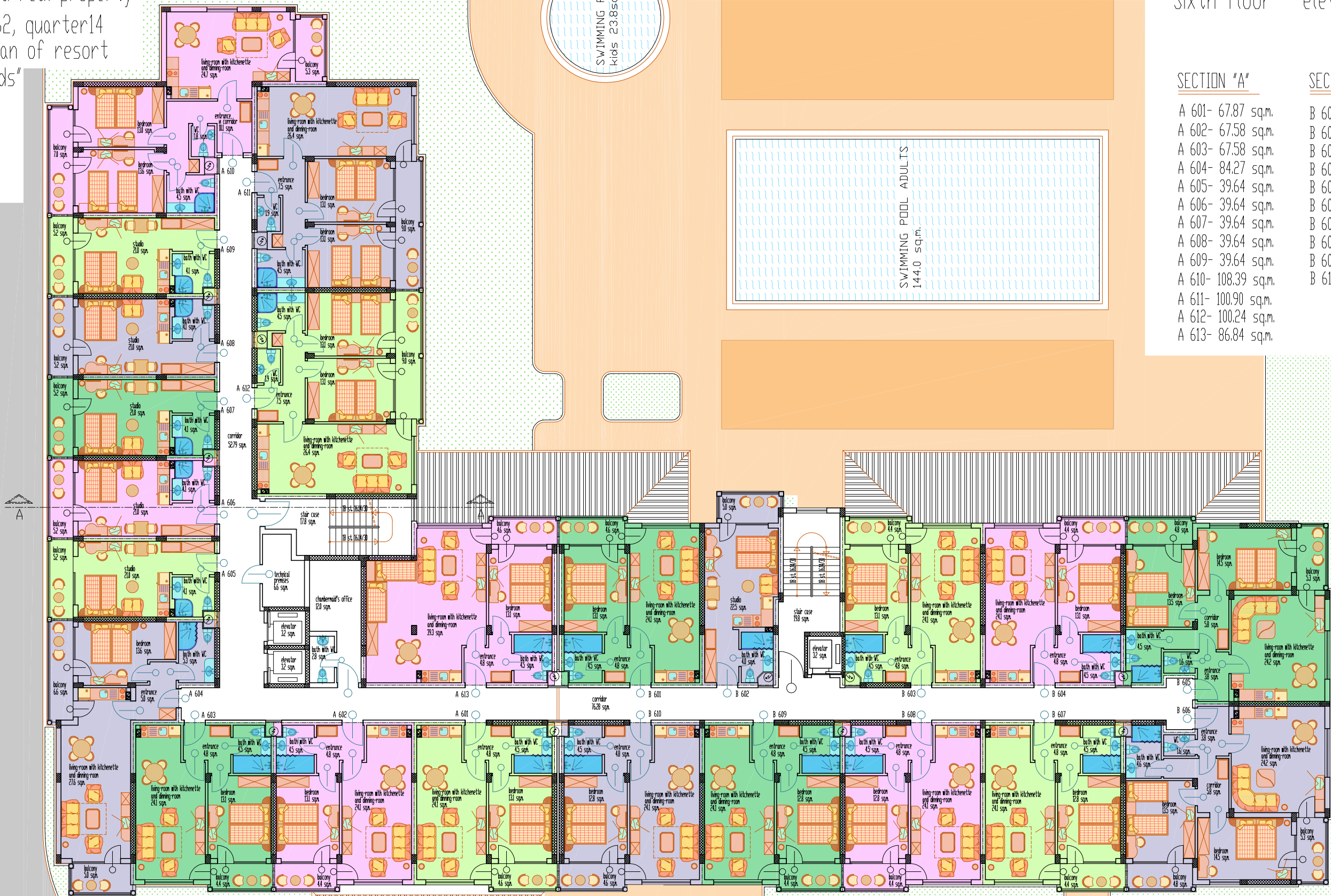


APARTMENT HOTEL "BENDITA MARE"
situated in regulated real property
III- 61,431,64 and 462, quarter14
according to the plan of resort
complex "Golden sands"



Sixth floor - elev. +15.15

SECTION "A"	SECTION "B"
A 601- 67.87 sq.m.	B 601- 68.07 sq.m.
A 602- 67.58 sq.m.	B 602- 42.09 sq.m.
A 603- 67.58 sq.m.	B 603- 67.72 sq.m.
A 604- 84.27 sq.m.	B 604- 68.05 sq.m.
A 605- 39.64 sq.m.	B 605- 105.17 sq.m.
A 606- 39.64 sq.m.	B 606- 105.17 sq.m.
A 607- 39.64 sq.m.	B 607- 67.84 sq.m.
A 608- 39.64 sq.m.	B 608- 67.58 sq.m.
A 609- 39.64 sq.m.	B 609- 67.58 sq.m.
A 610- 108.39 sq.m.	B 610- 67.86 sq.m.
A 611- 100.90 sq.m.	
A 612- 100.24 sq.m.	
A 613- 86.84 sq.m.	



APARTMENT HOTEL "BENDITA MARE"
situated in regulated real property
III- 61,431,64 and 462, quarter14 according to
the plan of resort complex "Golden sands"



"ARHPR" Ltd.
Varna

Sixth floor - elev. +15.15	Scale 1:200
investor: " ASPI TOUR " Ltd.	
stage: PRELIMINARY PROJECT	date september 2006
part: ARCHITECTURE	
drafter: E.Rasheva arch.tecn.	
designed by: R. Rashev dipl. arch.	
investor:	
manager: Radoslav Rashev	